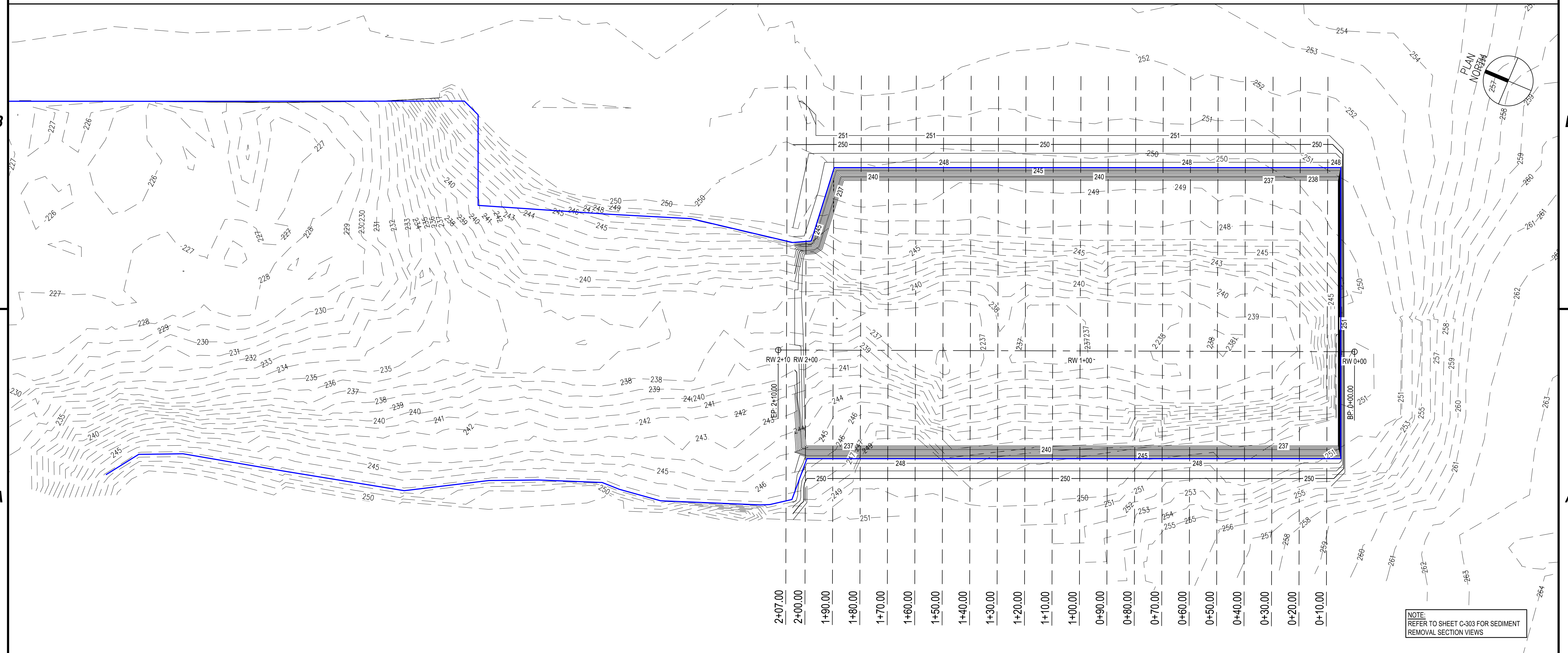


Sediment Removal Material Table			
Station	Area	Incremental Volume (CY)	Cumulative Volume (CY)
0+10.00	0.00	0.00	0.00
0+20.00	0.00	0.00	0.00
0+30.00	0.00	0.00	0.00
0+40.00	0.00	0.00	0.00
0+50.00	29.26	3.61	3.61
0+60.00	77.24	19.02	22.63
0+70.00	71.69	27.57	50.20
0+80.00	64.78	25.26	75.46
0+90.00	69.30	24.82	100.29
1+00.00	54.64	22.90	123.19
1+10.00	53.35	20.00	143.19
1+20.00	61.51	21.25	164.44
1+30.00	81.65	26.42	190.86
1+40.00	51.47	24.44	215.30
1+50.00	32.86	15.49	230.79
1+60.00	58.57	16.70	247.49
1+70.00	55.26	21.08	268.57
1+80.00	59.50	21.25	289.81
1+90.00	82.41	26.17	315.98
2+00.00	89.67	31.86	347.84
2+07.00	0.00	7.75	355.59

Rock Removal Material Table			
Station	Area	Incremental Volume (CY)	Cumulative Volume (CY)
0+10.00	1119.36	0.00	0.00
0+20.00	858.90	365.28	365.28
0+30.00	759.25	299.47	664.75
0+40.00	727.64	275.33	940.08
0+50.00	674.07	259.51	1199.59
0+60.00	598.49	235.52	1435.11
0+70.00	597.57	221.49	1656.60
0+80.00	601.06	221.97	1878.57
0+90.00	602.09	222.81	2101.38
1+00.00	588.84	220.54	2321.91
1+10.00	570.63	214.71	2536.62
1+20.00	561.96	209.74	2746.36
1+30.00	545.76	205.13	2951.48
1+40.00	507.79	195.06	3146.55
1+50.00	514.34	189.28	3335.83
1+60.00	630.08	211.57	3547.40
1+70.00	700.33	246.26	3793.65
1+80.00	622.32	244.79	4038.45
1+90.00	483.53	204.25	4242.70
2+00.00	182.60	118.92	4361.62
2+07.00	0.00	15.78	4377.40



Dec 11, 2020 - 4:06pm F:\Project\301 - Port of Oswego\301.030.002 - REDI GRANTS\301.030.002 - 3RED02 Gobble Marina\Design\CADD\Sheet Files\Permitting\301.030002_C-104_Sediment Removal.dwg

A1 SEDIMENT REMOVAL ALIGNMENT PLAN
SCALE: 1" = 20'-0"



C&S Engineers, Inc.
499 Col. Eileen Collins Blvd.
Syracuse, New York 13212
Phone: 315-455-2000
Fax: 315-455-9667
www.cscos.com

PRELIMINARY
NOT FOR
CONSTRUCTION



PORT OF OSWEGO AUTHORITY
3RED02
PORT AUTHORITY BOATING CTR
GOBLE DRY DOCK AND SHIP YARD
PERMITTING

MARK	DATE	DESCRIPTION
REVISIONS		
PROJECT NO:		301030002
DATE:		DECEMBER 2020
DRAWN BY:		
DESIGNED BY:		
CHECKED BY:		
NO ALTERATION PERMITTED HEREON EXCEPT AS PROVIDED UNDER SECTION 7209 SUBDIVISION 2 OF THE NEW YORK EDUCATION LAW		

SEDIMENT REMOVAL ALIGNMENT PLAN

C-104